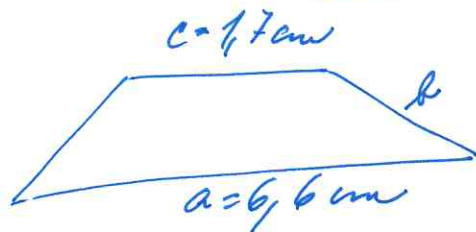


# 17. Du' - řešení

1)



$$b = ? \text{ cm}$$

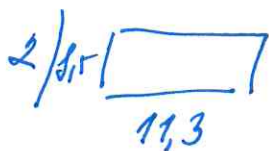
$$o = 15,7 \text{ cm}$$

$$o = 2b + a + c$$

$$15,7 = 2b + 6,6 + 1,7$$

$$7,4 = 2b$$

$$\underline{\underline{3,7 \text{ cm} = b}}$$



$$S_{\square} = 11,3 \cdot 1,5 = 9,05 \text{ cm}^2$$

$$S_{\text{trapezoid}} = \frac{(11,3 + 14) \cdot 1,5}{2} = 31,3 \cdot 0,6 = 18,78 \text{ cm}^2$$

$$S_{\text{rozdiel}} = 18,78 - 9,05 = \underline{\underline{9,73 \text{ cm}^2}}$$



$$a_1 = 120 \text{ cm}$$

$$b_1 = 80 \text{ cm}$$

$$S = a_1 \cdot b_1$$

$$S = 120 \cdot 80 = \underline{\underline{9600 \text{ cm}^2}}$$

$$a_2 = 100 \text{ cm}$$

$$b_2 = 60 \text{ cm}$$

$$S_2 = 100 \cdot 60$$

$$S_2 = \underline{\underline{6000 \text{ cm}^2}}$$

100% . . . . . 9600 cm<sup>2</sup>

x% . . . . . 6000 cm<sup>2</sup>

---

1% . . . . . 96

$$\frac{6000}{96} = 62,5\%$$

Z prirodni' delky zitalo 62,5%

4)  $m = 50 \text{ kg}$   
 $A = 10 \text{ mm}$   
 $t = 15 \text{ s}$   
 $F = 500 \text{ N}$

$$P = \frac{F \cdot s}{t} = \frac{500 \cdot 10}{15} = \underline{\underline{333,33 \text{ W}}}$$

5)  $V = 30 \text{ m}^3$   $P = ? \text{ W}$

$$t = 1 \text{ h} = 3600 \text{ s}$$

$$m = ? \text{ kg}$$

$$A = 6 \text{ mm}$$

$$F = ? \text{ N}$$

$$\rho = 500 \text{ kg/m}^3$$

$$m = \rho \cdot V = 500 \cdot 30 = 15000 \text{ kg}$$

$$F = 15000 \text{ N}$$

$$P = \frac{F \cdot s}{t} = \frac{15000 \cdot 6}{3600} = \frac{1500}{2} = \underline{\underline{750 \text{ W}}}$$